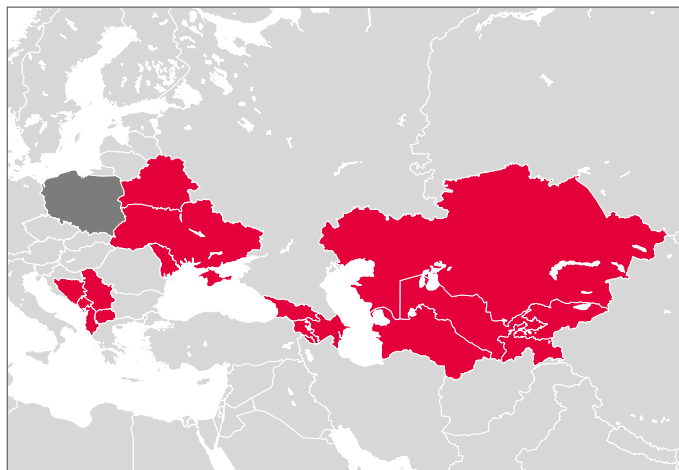


# THE **BANACH** SCHOLARSHIP PROGRAMME

**Become a NAWA scholar!**

**If you are a citizen of:**

- Albania
- Armenia
- Azerbaijan
- Belarus
- Bosnia and Herzegovina
- Montenegro
- Georgia
- Kazakhstan
- Kyrgyzstan
- Kosovo
- North Macedonia
- Moldova
- Serbia
- Tajikistan
- Turkmenistan
- Ukraine
- Uzbekistan

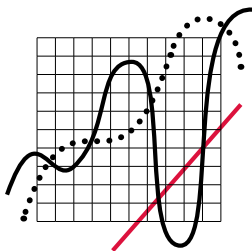


**If you plan to continue education at master's degree level  
in the field of:**

- engineering and technical sciences
- agricultural sciences
- applied and life sciences

**Then we welcome you to apply for The Banach Programme!**

# THE **BANACH** SCHOLARSHIP PROGRAMME



## Why join the Banach Scholarship Programme?

- tuition-free second-cycle (master's degree) studies at one of several hundred public universities based in Poland's biggest cities
- a monthly scholarship to cover the living allowance – PLN 1,500 (ca. EUR 350)
- a 1-year (if you don't know Polish) or a 1-month (if you know Polish) language course to help you learn Polish and get to know the Polish culture (while also enjoying a scholarship)
- a European diploma certifying completion of studies, honoured and respected worldwide

## How to apply?

Apply individually online via NAWA's system: [www.nawa.pl/login](http://www.nawa.pl/login)

Select the university and the programme in which you would like to enrol, based on the educational offer of Polish higher education institutions.

---

### \* **STEFAN BANACH**

- notable Polish Professor of Mathematics
- co-founder of the Lviv School of Mathematics and the branch of mathematics known as functional analysis

---

The Stefan Banach Scholarship Programme established to allow the citizens of the EU's Eastern Partnership, Central Asian and Western Balkan countries to enrol in second-cycle degree programmes at Polish universities is a joint initiative of the Ministry of Foreign Affairs and NAWA implemented as part of the Polish development assistance programme.

